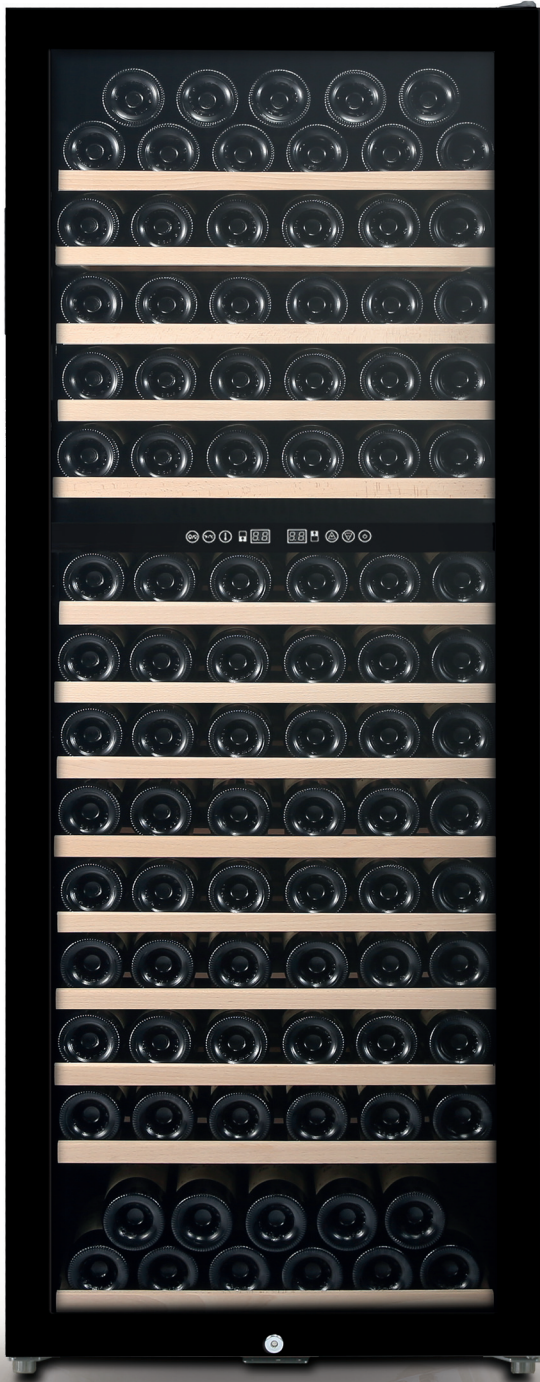




# COOLERS

## MAGENTA 408 2T

PLUG-IN AND SWITCH ON YOUR BUSINESS!





eptarefrigeration

# wine COOLERS

## MAGENTA 408 2T

PLUG-IN AND SWITCH ON YOUR BUSINESS!

Temperatura Doppia / Dual Temperature  
**SUPERIORE / UPPER: +5°C ++12°C**  
**INFERIORE / LOWER: +5°C ++22°C**

Dimensioni Mobile (mm)  
Cabinet Dimensions (mm)  
**Larghezza / Width: 598**  
**Profondità / Depth: 705**  
**Altezza / Height: 1610**

Volume Netto (Lt)  
Net Volume (Lt)  
**386**

Capacità Bottiglie Bordolesi (0.75 Lt)  
Bordeaux Bottles Capacity (0.75 Lt)  
**154**

Ripiani in Legno  
Wood Shelves  
**13 + 1**

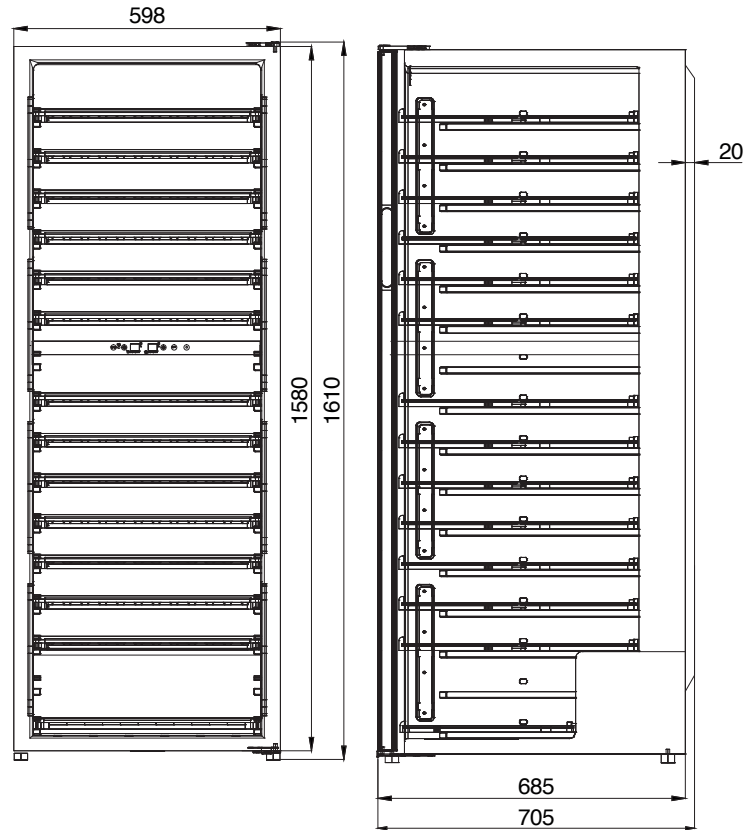
Refrigerazione  
Cooling System  
**Ventilata / Ventilated**

Gas Refrigerante  
Refrigerant Gas  
**R600a**

Peso Lordo / Netto (Kg)  
Gross / Net Weight (Kg)  
**91 - 82**

Dimensioni Imballo (mm)  
Packaging Dimensions (mm)  
**Larghezza / Width: 655**  
**Profondità / Depth: 780**  
**Altezza / Height: 1700**

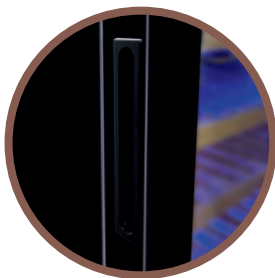
Carico  
Loading  
**Container 20" (ft) : 23**  
**Container 40" (ft) : 48**  
**Container 40"HQ (ft) : 48**



**CONTROLLORE ELETTRONICO /  
ELECTRONIC CONTROLLER**



**8 + 1 RIPIANI IN LEGNO /  
8 + 1 WOOD SHELVES**



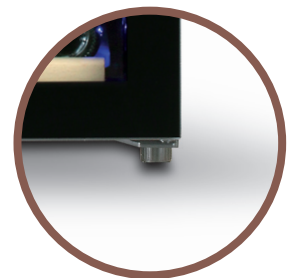
**MANIGLIA INCASSATA /  
HANDLE**



**CHIUSURA A CHIAVE /  
LOCKING SYSTEM**



**INTERNAL BLUE LED LIGHTS**



**4 PIEDINI /  
4 ADJUSTABLE FEETS**

Follow us on:



by Epta

PLUG-IN AND SWITCH ON YOUR BUSINESS!



EPTA SpA - Unità Locale CASALE MONFERRATO (AL) - via Achille Grandi, 43 - 15033 - Tel. +39 0142 436111 - Fax +39 0142 781540

[www.iarp-plugin.com](http://www.iarp-plugin.com)